

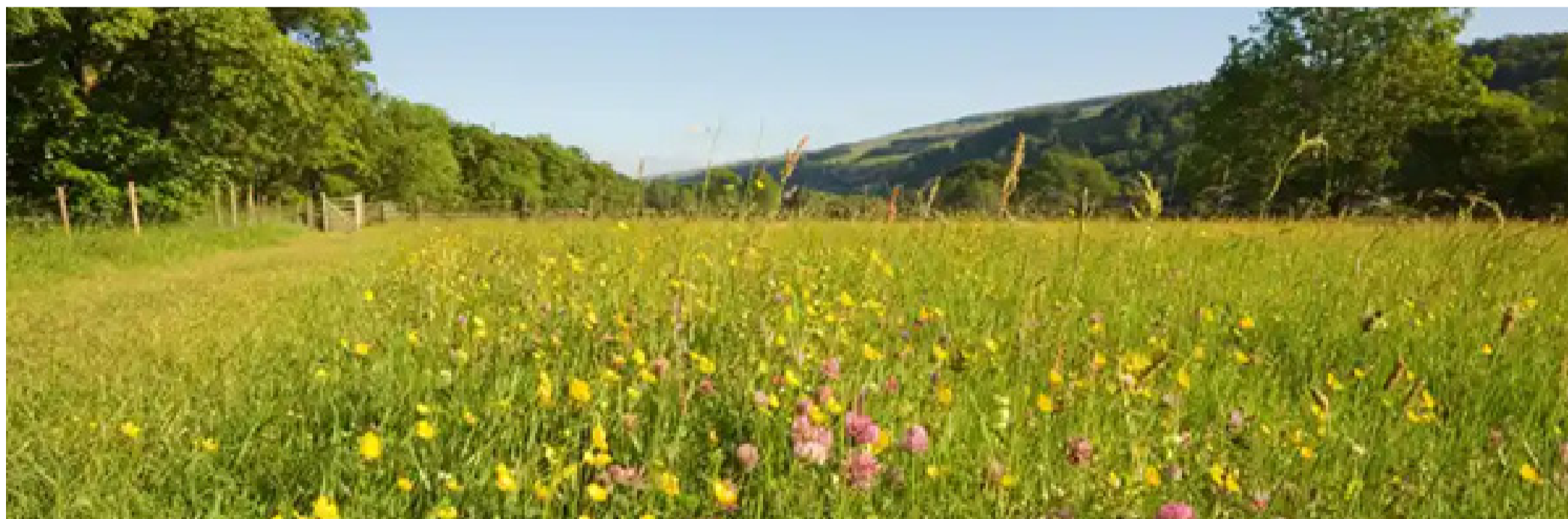
ECOLOGY AND BIODIVERSITY NET GAIN

The measures include native tree planting and hedgerow enhancement as well as the creation of a wild-flower meadow in the south of the site. The benefits of such improved tree and hedgerow cover will be to:

- Help embed the development in the landscape;
- improve the visual amenity of the site and its surroundings;
- strengthen the field pattern of the site and its surroundings; and
- create more shelter and encourage and support wildlife and flora.

Tree and hedgerow planting therefore has benefits relating to landscape and visual impacts as well as biodiversity.

JBM also has plans to place beehives within the wild-flower meadow; this will increase plant pollination, at great benefit to the ecosystem, in the surrounding area. Other features such as insect hotels, log piles for insects, bird boxes and shelters across the site will also be implemented.



JBM will strengthen characteristic features of the landscape & improve the visual amenity of the site.



Insect hotels and log piles will be added to the site to provide a safe haven for wildlife.



Bird boxes and shelters across the site will also be implemented.